

July 2016

Karen O’Kane - Better Broadband for Norfolk Programme Director

# Better Broadband for Norfolk objective

BBfN

To achieve the maximum coverage for the available investment

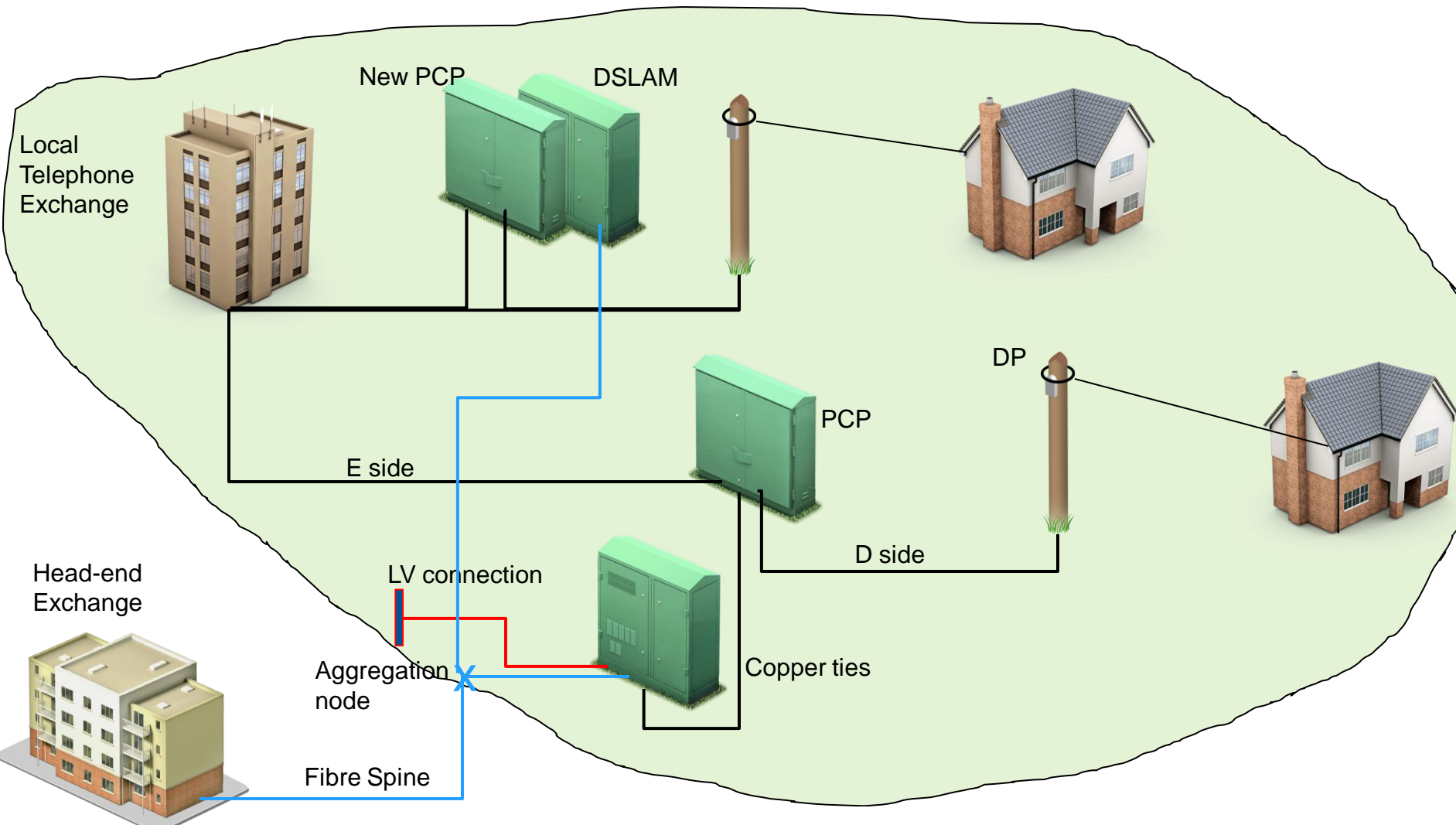
No community prioritised over any other

There are all types of users in all communities, both residents and businesses

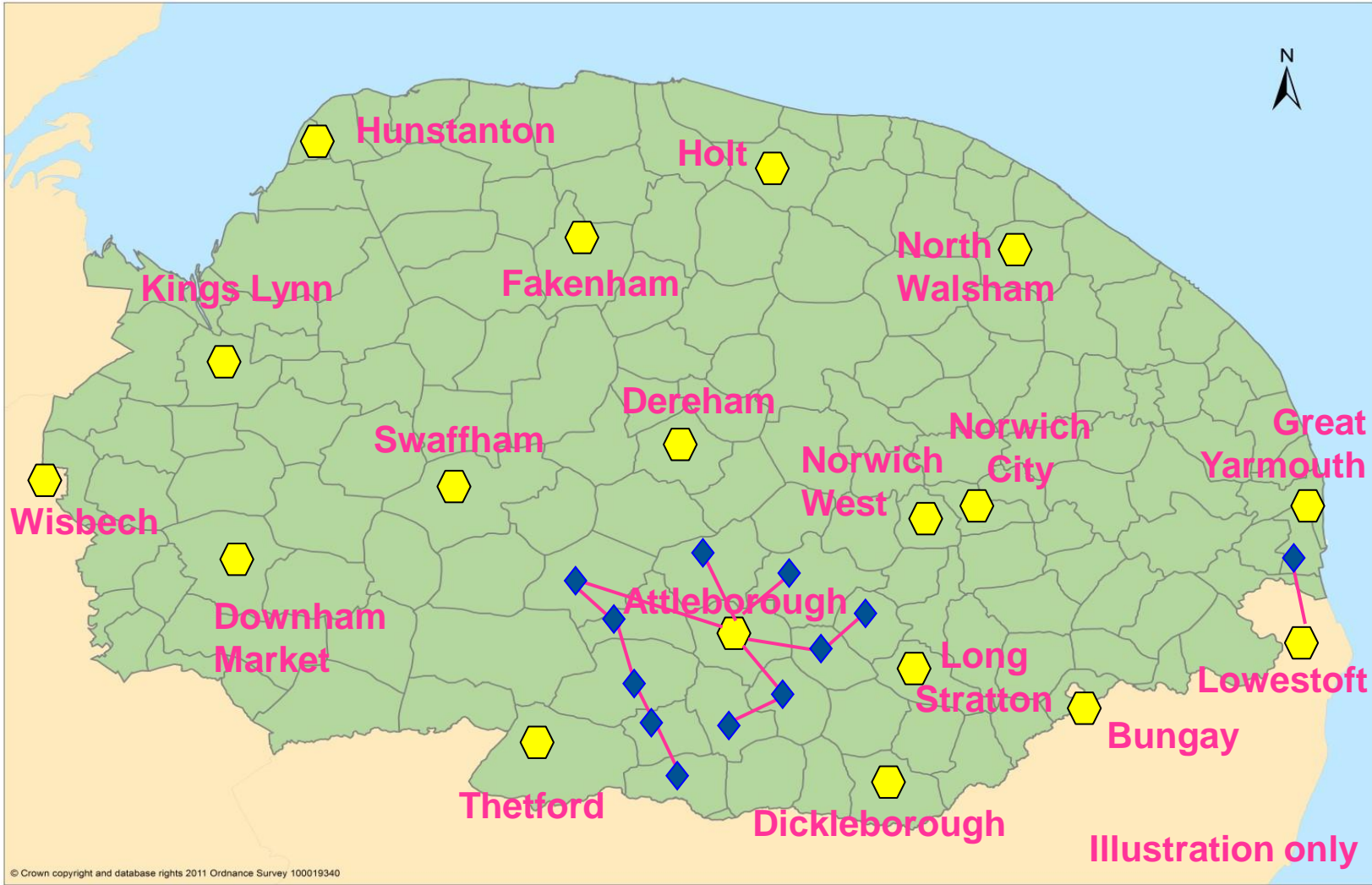
Implementation only confirmed following survey

The most efficient rollout, to achieve maximum coverage for the available funding. This means rollout plans are flexible

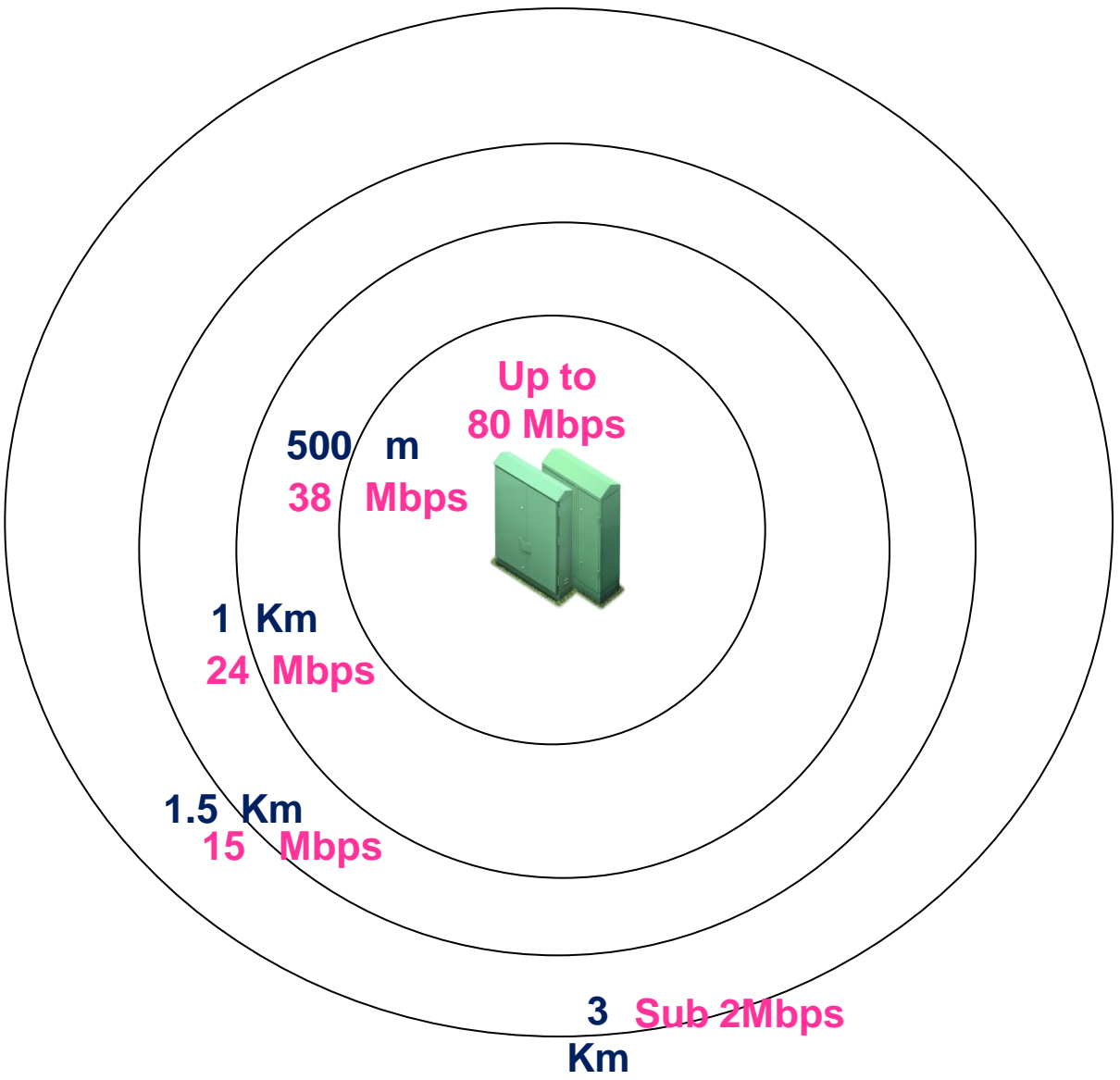
# Network Architecture – FTTC (Fibre to the cabinet)



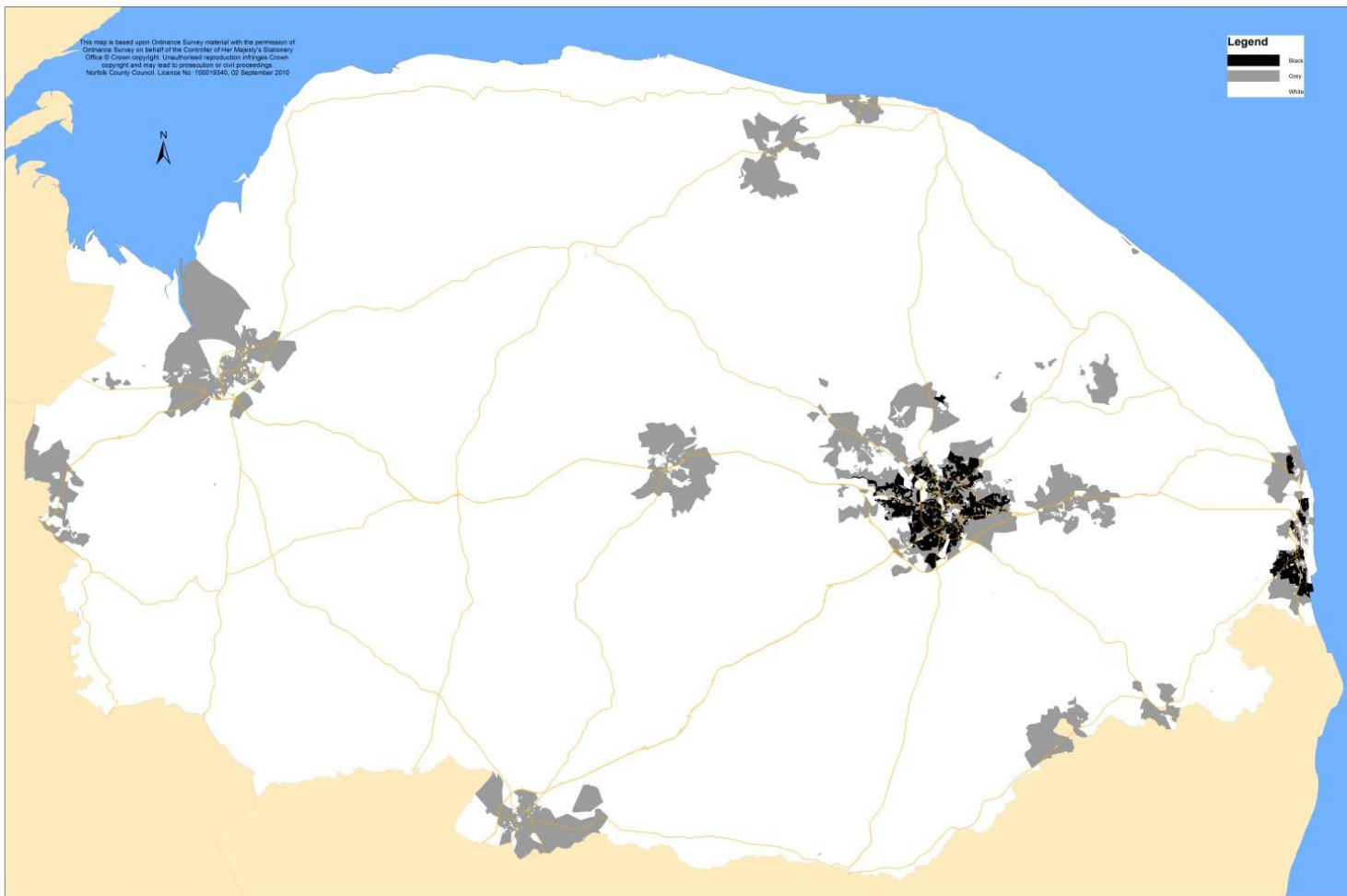
# How do we ensure maximum coverage for the available investment



# Distance from the cabinet influences speed



# Norfolk fibre coverage without BBfN



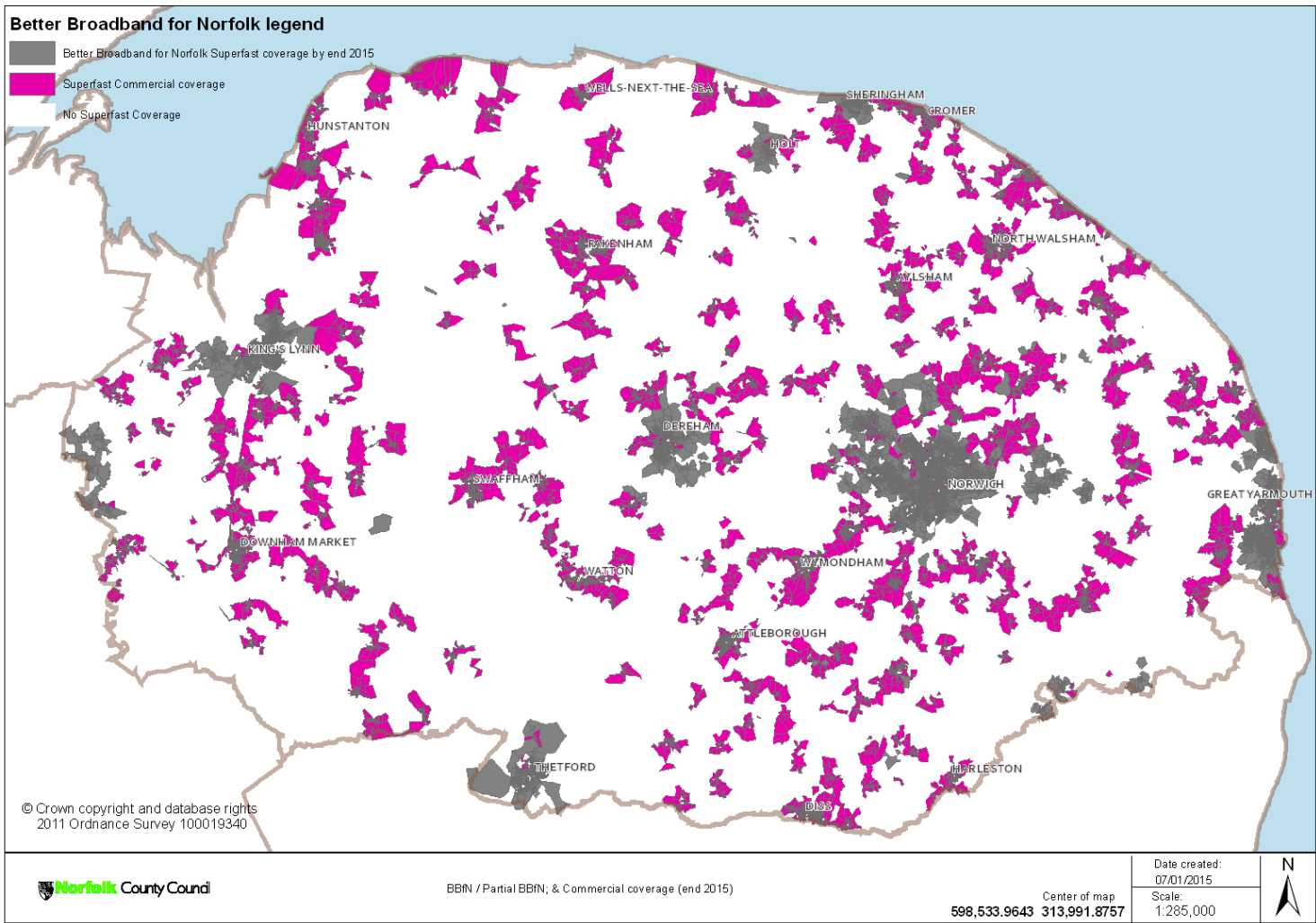
- Norfolk properties: **424,000**
- Access to fibre infrastructure via commercial deployments (BT Openreach/ Virgin Media) **180,000 – 42%**
- No fibre coverage **244,000 – 58%** including 34,000 properties with speeds of less than 2Mbps

NGA Broadband "White/Grey/Black Mapped to Postcode Unit Level

NGA Broadband Infrastructure Serving Norfolk

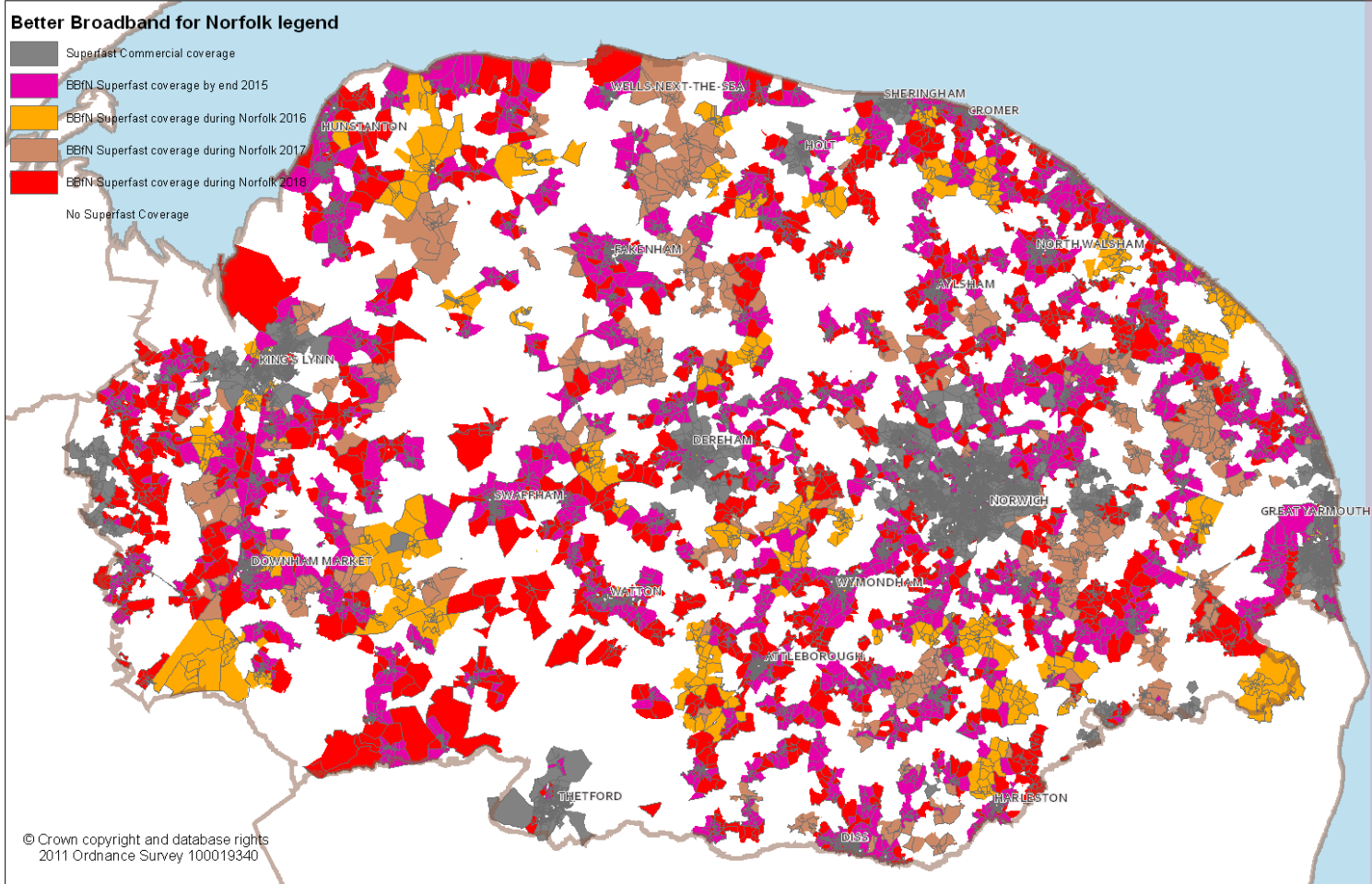
Map produced by Norfolk County Council  
Andy Ambridge & GIS Team 01/05/2012  
ICT Shared Services

# Expected coverage at the end of 2015, when BBfN1 is complete



- Norfolk properties: **424,000**
- Total BBfN1 / commercial access to fibre infrastructure **357,000 – 84%**
- No fibre coverage **67,233 – 16%** including less than 10,000 properties with speeds of less than 2Mbps

# Expected coverage spring 2018, when BBfN2 part A is complete



- Norfolk properties: **424,000**
- Total BBfN1 & BBfN2 part A / commercial access to fibre infrastructure **384,000 – 90%**
- No fibre coverage **41,063 – 10%** including less than 5,000 properties with speeds of less than 2Mbps

© Crown copyright and database rights 2011 Ordnance Survey 100019340

Norfolk County Council

BBfN All/Predicted coverage (2015/16/17/18)

Date created: 07/01/2015  
 Scale: 1:285,000  
 Center of map: 598.533.9643 313.991.8757





# Expected coverage by District

	Total No. of premises in district or county	Commercial coverage	BBfN original contract coverage at completion	Combined commercial and BBfN original contract coverage	BBfN second contract coverage	Combined commercial and total BBfN coverage
Breckland	61,095	30%	49%	79%	9%	87%
Broadland	57,780	56%	30%	86%	6%	92%
Great Yarmouth	47,417	66%	27%	93%	1%	95%
King's Lynn and West Norfolk	73,993	29%	54%	83%	6%	89%
North Norfolk	56,112	11%	64%	74%	10%	85%
Norwich	69,343	93%	5%	98%	1%	99%
<b>South Norfolk</b>	<b>58,860</b>	<b>15%</b>	<b>61%</b>	<b>75%</b>	<b>10%</b>	<b>86%</b>
<b>Norfolk total</b>	<b>424,600</b>	<b>43%</b>	<b>41%</b>	<b>84%</b>	<b>6%</b>	<b>90%</b>

- District Council contributions matched by Government
- £5 million rebate as Take-up is higher than planned and £10 million contract 1 underspend
- Government / Norfolk validation of BT's proposal currently, expect to sign contract extension by the end of July
- Detailed planning to create one integrated plan by the end of the year

# Stow Bedon

- Two properties via Attleborough cabinet 3 – already Superfast
- 80 properties served from Caston cabinet 1 which will be fibre enabled as part of the new contract extension. A further fibre solution is planned for some outlying properties but there are three properties that will not be covered:
  - There are three properties that are too far from the proposed fibre solutions to have access to improved speeds
- No Fibre plans for 12 Caston and Great Hockham EO Line properties:

# Online Checkers

- BT Wholesale Line Checker

<https://www.btwholesale.com/includes/adsl/adsl.htm>

- Search by phone number for BT ISP customers. Use the Address Checker for other ISP customers by choosing Address Checker, entering your postcode, press submit and select your address from the list

Address XXXX, STOW BEDON, ATTLEBOROUGH, NR17 1HP on Exchange CASTON is served by Cabinet 1

ADSL Products	Downstream Line Rate(Mbps)	Upstream Line Rate(Mbps)	Downstream Range(Mbps)	Availability Date	
ADSL Max	Up to 2.5	--	1.5 to 5	Available	--
Fixed Rate	1	--	--	Available	--

- When a fibre cabinet is installed residents need to contact their Internet Service Provider, or any other. Speeds don't automatically increase – best to shop around for the best deal

<http://consumers.ofcom.org.uk/tv-radio/price-comparison>

# Basic Broadband Voucher Scheme for properties with less the 2Mbps

BBfN

- Central Government Scheme is available
- Voucher for set-up and installation
- Government's Guidance Note and Application Form on the Better Broadband for Norfolk website

[www.betterbroadbandnorfolk.co.uk](http://www.betterbroadbandnorfolk.co.uk)